



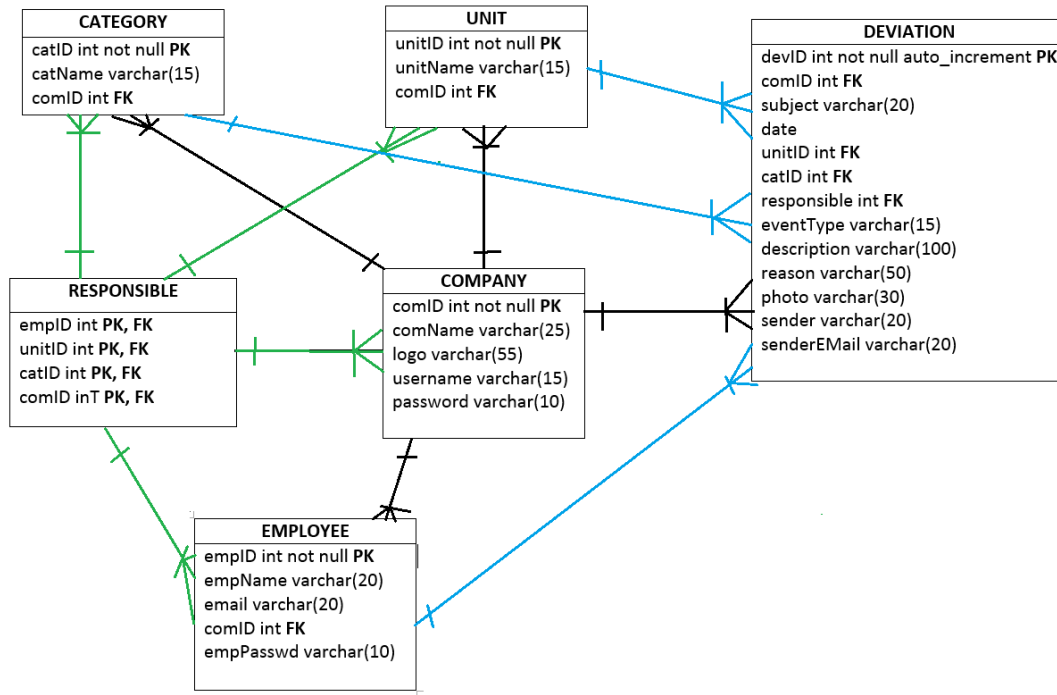
# TESTDATABASE

Deviations and Reporting

## FORORD

I denne samlingen er det skripter som ble brukt for å opprette tabeller i test-database og fylle dem med fiktive data. Siden vi ikke fikk tilgang til CEMAsys sin database via APIet (fordi oppdragsgiveren kunne ikke levere dem i tide), skulle vår test-database fungere som CEMAsys: brukerdata hentes fra den og rapporter lagres i den.

Oversikt over tabeller og forbindelser mellom dem på ER-modell på [Figur 1](#).



Figur 1: ER-modell – test-database.

## Innholdsliste

<b>1 COMPANY TABELL</b> .....	<b>3</b>
1.1 Oppretting av tabellen.....	3
1.2 Fiktive data .....	3
<b>2 CATEGORY TABELL</b> .....	<b>4</b>
2.1 Oppretting av tabeller .....	4
2.2 Fiktive data .....	4
<b>3 UNIT TABELL</b> .....	<b>6</b>
3.1 Oppretting av tabeller .....	6
3.2 Fiktive data .....	6
<b>4 EMPLOYEE TABELL</b> .....	<b>7</b>
4.1 Oppretting av tabell.....	7
4.2 Fiktive data .....	7
<b>5 RESPONSIBLE TABELL</b> .....	<b>8</b>
5.1 Oppretting av tabell.....	8
5.2 Fiktive data .....	8
<b>6 DEVIATION TABELL</b> .....	<b>10</b>
6.1 Oppretting av tabell.....	10

## 1 COMPANY TABELL

### 1.1 Oppretting av tabellen

```
create table COMPANY
(
    comID int not null,
    comName varchar(25),
    logo varchar(55),
    username varchar(15),
    password varchar(10),
    primary key(comID)
);
```

### 1.2 Fiktive data

```
insert into COMPANY
values('101','Swedbank','http://student.iu.hio.no/~s180472/swedbanklogo.png','swedbank','1111');
```

```
insert into COMPANY
values('102','Nordea','http://student.iu.hio.no/~s180472/nordea.jpg','nordea','2222');
```

```
insert into COMPANY
values('103','CO2focus','http://student.iu.hio.no/~s180472/co2focuslogo.jpg','c02','3333');
```

## 2 CATEGORY TABELL

### 2.1 Oppretting av tabeller

```
create table CATEGORY
(
    catID int not null,
    catName varchar(15),
    comID int,
    primary key(catID),
    foreign key(comID) references COMPANY(comID)
);
```

```
create table CATEGORY_NO
(
    catID int not null,
    catName varchar(25),
    comID int, primary key(catID),
    foreign key(comID) references COMPANY(comID)
);
```

### 2.2 Fiktive data

```
insert into CATEGORY values('301','Energy','101');
insert into CATEGORY values('302','Waste','101');
insert into CATEGORY values('303','Business travel','101');
insert into CATEGORY values('304','Pollution','101');
insert into CATEGORY values('305','Energy','102');
insert into CATEGORY values('306','Business travel','102');
insert into CATEGORY values('307','Responsible investment','102');
insert into CATEGORY values('308','Supply management','102');
insert into CATEGORY values('309','Pollution','103');
insert into CATEGORY values('310','Business travel','103');
insert into CATEGORY values('311','Supply management','103');
insert into CATEGORY values('312','Responsible credit','103');

insert into CATEGORY values('301','Enrgi','101');
insert into CATEGORY values('302','Avfall','101');
insert into CATEGORY values('303','Forretningreise','101');
insert into CATEGORY values('304','Forurensing','101');
insert into CATEGORY values('305','Enrgi','102');
insert into CATEGORY values('306','Forretningreise','102');
insert into CATEGORY values('307','Ansv.investeringer','102');
insert into CATEGORY values('308','Ansv.leverandøroppfølging','102');
```

```
insert into CATEGORY values('309','Forurensing','103');
```

```
insert into CATEGORY values('310','Forretningreise','103');
```

```
insert into CATEGORY values('311','Ansv.leverandøroppfølging','103');
```

```
insert into CATEGORY values('312','Ansv.lån','103');
```

## 3 UNIT TABELL

### 3.1 Oppretting av tabeller

```
create table UNIT
(
    unitID int not null,
    unitName varchar(15),
    comID int, primary key(unitID),
    foreign key(comID) references COMPANY(comID)
);
```

```
create table UNIT_NO
(
    unitID int not null,
    unitName varchar(25),
    comID int,
    primary key(unitID),
    foreign key(comID) references COMPANY(comID)
);
```

### 3.2 Fiktive data

```
insert into UNIT values('401','Norway','101');
```

```
insert into UNIT values('402','Sweden','101');
```

```
insert into UNIT values('403','Poland','101');
```

```
insert into UNIT values('404','Norway','102');
```

```
insert into UNIT values('405','Finland','102');
```

```
insert into UNIT values('406','Sweden','102');
```

```
insert into UNIT values('407','Oslo','103');
```

```
insert into UNIT values('408','Bergen','103');
```

```
insert into UNIT values('409','Stockholm','103');
```

```
insert into UNIT_NO values('401','Norge','101');
```

```
insert into UNIT_NO values('402','Sverige','101');
```

```
insert into UNIT_NO values('403','Poland','101');
```

```
insert into UNIT_NO values('404','Norge','102');
```

```
insert into UNIT_NO values('405','Finland','102');
```

```
insert into UNIT_NO values('406','Sverige','102');
```

```
insert into UNIT_NO values('407','Oslo','103');
```

```
insert into UNIT_NO values('408','Bergen','103');
```

```
insert into UNIT_NO values('409','Stockholm','103');
```

## 4 EMPLOYEE TABELL

### 4.1 Oppretting av tabell

```
create table EMPLOYEE
(
    empID int not null,
    empName varchar(20),
    email varchar(20),
    comID int,
    empPasswd varchar(10),
    primary key(empID),
    foreign key(comID) references COMPANY(comID)
);
```

### 4.2 Fiktive data

```
insert into EMPLOYEE values('201','Daniel Engebakken','j****@hotmail.com','101','1111');
```

```
insert into EMPLOYEE values('202','Igor Tveita','j****@hotmail.com','101','2222');
```

```
insert into EMPLOYEE values('203','Sondre Brekkelund','j****@hotmail.com','101','3333');
```

```
insert into EMPLOYEE values('204','Lina Andersen','j****@hotmail.com','101','4444');
```

```
insert into EMPLOYEE values('205','Magnus Forsman','j****@hotmail.com','101','5555');
```

```
insert into EMPLOYEE values('206','Svein Eriksen','j****@hotmail.com','102','6666');
```

```
insert into EMPLOYEE values('207','Mari Haugland','j****@hotmail.com','102','7777');
```

```
insert into EMPLOYEE values('208','Helene Husland','j****@hotmail.com','102','8888');
```

```
insert into EMPLOYEE values('209','Martin Larsen','j****@hotmail.com','103','9999');
```

```
insert into EMPLOYEE values('210','Eivind Lund','j****@hotmail.com','103','1010');
```

```
insert into EMPLOYEE values('211','Nina Ramstad','j****@hotmail.com','103','1212');
```

```
insert into EMPLOYEE values('212','Matias Nordberg','j****@hotmail.com','103','1313');
```



## 5 RESPONSIBLE TABELL

### 5.1 Oppretting av tabell

```
create table RESPONSIBLE
(
    empID int,
    unitID int,
    catID int,
    comID int,
    primary key(empID, unitID, catID,comID),
    foreign key(empID) references EMPLOYEE(empID),
    foreign key(unitID) references UNIT(unitID),
    foreign key(catID) references CATEGORY(catID),
    foreign key(comID) references COMPANY(comID)
);
```

### 5.2 Fiktive data

```
insert into RESPONSIBLE values('201','401','301','101');
insert into RESPONSIBLE values('201','401','302','101');
insert into RESPONSIBLE values('203','401','303','101');
insert into RESPONSIBLE values('202','401','304','101');
insert into RESPONSIBLE values('202','402','301','101');
insert into RESPONSIBLE values('202','402','302','101');
insert into RESPONSIBLE values('204','402','303','101');
insert into RESPONSIBLE values('201','402','304','101');
insert into RESPONSIBLE values('203','403','301','101');
insert into RESPONSIBLE values('204','403','302','101');
insert into RESPONSIBLE values('204','403','303','101');
insert into RESPONSIBLE values('201','403','304','101');

insert into RESPONSIBLE values('208','404','305','102');
insert into RESPONSIBLE values('208','404','306','102');
insert into RESPONSIBLE values('207','404','307','102');
insert into RESPONSIBLE values('207','404','308','102');
insert into RESPONSIBLE values('206','405','305','102');
insert into RESPONSIBLE values('206','405','306','102');
insert into RESPONSIBLE values('207','405','307','102');
insert into RESPONSIBLE values('207','405','308','102');
```

```
insert into RESPONSIBLE values('206','406','305','102');
```

```
insert into RESPONSIBLE values('206','406','306','102');
```

```
insert into RESPONSIBLE values('205','406','307','102');
```

```
insert into RESPONSIBLE values('205','406','308','102');
```

```
insert into RESPONSIBLE values('209','407','309','103');
```

```
insert into RESPONSIBLE values('210','407','310','103');
```

```
insert into RESPONSIBLE values('211','407','311','103');
```

```
insert into RESPONSIBLE values('212','407','312','103');
```

```
insert into RESPONSIBLE values('209','408','309','103');
```

```
insert into RESPONSIBLE values('210','408','310','103');
```

```
insert into RESPONSIBLE values('211','408','311','103');
```

```
insert into RESPONSIBLE values('212','408','312','103');
```

```
insert into RESPONSIBLE values('209','409','309','103');
```

```
insert into RESPONSIBLE values('210','409','310','103');
```

```
insert into RESPONSIBLE values('211','409','311','103');
```

```
insert into RESPONSIBLE values('212','409','312','103');
```

## 6 DEVIATION TABELL

### 6.1 Oppretting av tabell

```
create table DEVIATION
(
    devID int not null auto_increment,
    comID int,
    subject varchar(20),
    date date,
    unitID int,
    catID int,
    responsible int,
    eventType varchar(15),
    description varchar(100),
    reason varchar(50),
    photo varchar(30),
    sender varchar(20),
    senderEMail varchar(20),
    primary key(devID),
    foreign key(comID) references COMPANY(comID),
    foreign key(unitID) references UNIT(unitID),
    foreign key(catID) references CATEGORY(catID),
    foreign key(responsible) references EMPLOYEE(empID)
);
```